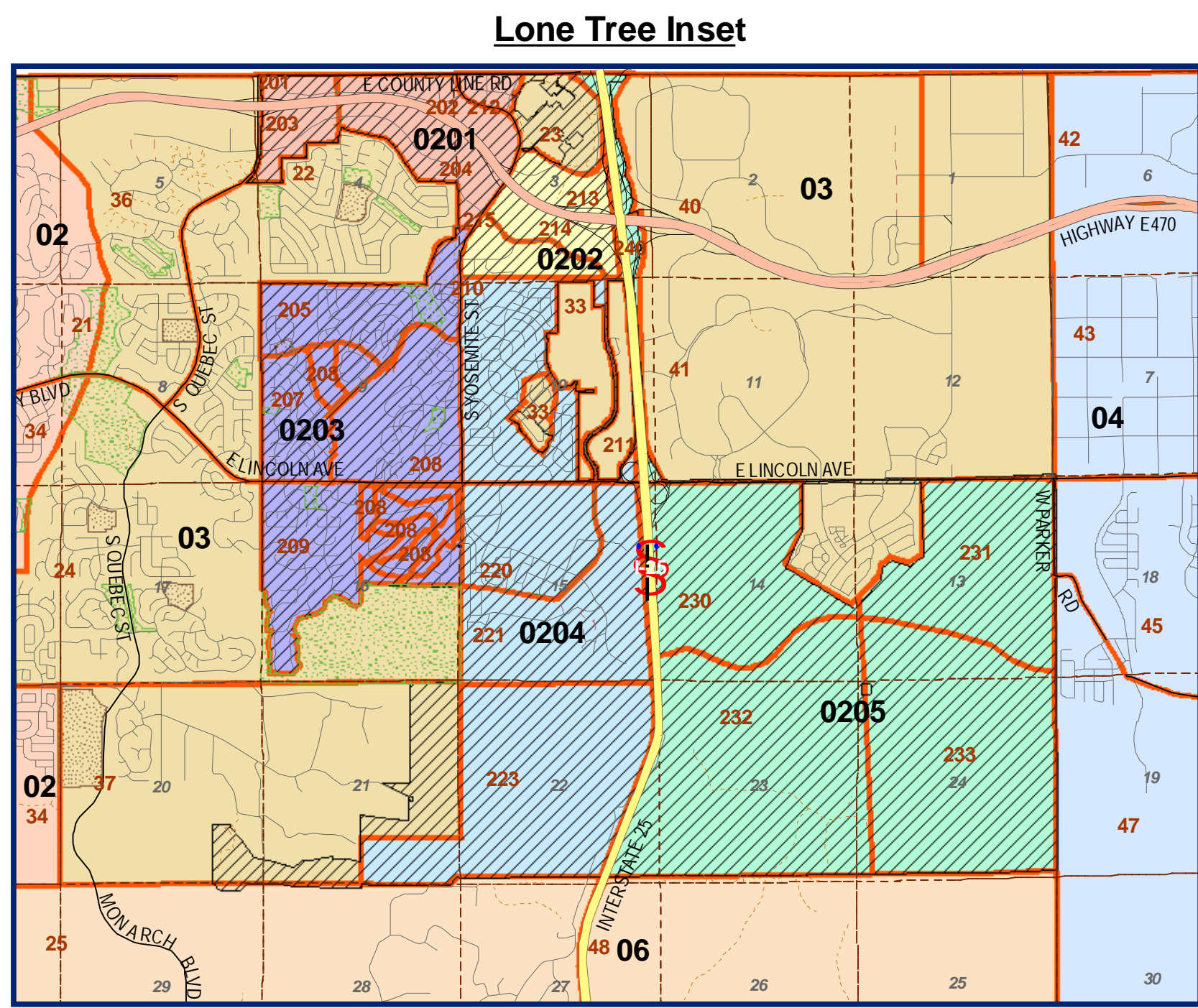
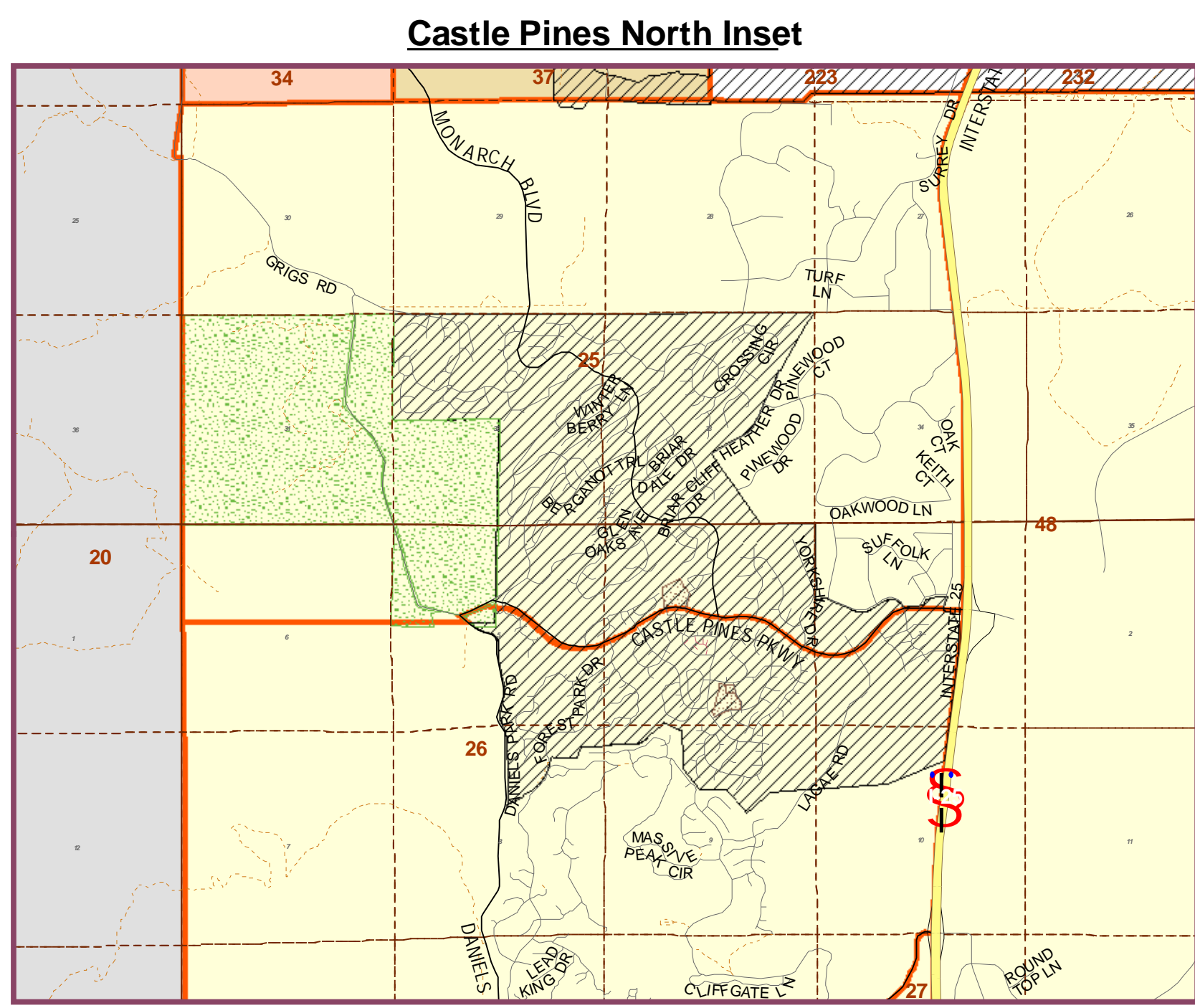


SHERIFF'S OFFICE 2004 PATROL DISTRICT BOUNDARIES Douglas County Colorado



Legend

- | | | | |
|--|------|--|---------------------|
| | 01 | | Interstate |
| | 02 | | US Highways |
| | 03 | | State Highways |
| | 04 | | Major Roads |
| | 05 | | Local Roads |
| | 06 | | Private Roads |
| | 07 | | Entrance/Exit Ramps |
| | 08 | | Access Easements |
| | 09 | | Geocodes |
| | 10 | | County Boundary |
| | 0201 | | Townships |
| | 0202 | | Sections |
| | 0203 | | Municipalities |
| | 0204 | | Parks |
| | 0205 | | Schools |

DISCLAIMER

All data and information ("Products") contained herein are for informational purposes only. Although such Products are believed to be accurate at the time of printing, Douglas County does not warrant that such Products are error free. Douglas County provides these Products on an "as is" basis without warranties of any kind, either express or implied, including, but not limited to, warranties of title or implied warranties of merchantability or fitness for a particular purpose. Douglas County shall not be liable for any direct, indirect, incidental, special or consequential damages arising out of the use of such Products, or the inability to use such Products or out of any breach of any warranty. The user acknowledges and agrees that the use of such Products is at the sole risk of the user.

General questions about this or any other Douglas County GIS products, including errors, omissions, corrections and/or updates should be directed to the Douglas County GIS Division at (303) 660-7416.

Douglas County GIS Division
Philip S. Miller, Sr., 100 Third St.
Castle Rock, Colorado 80104

1 0.5 0 1 2
Miles
1:63,360
1 inch equals 1 mile

Vicinity Map

